

# grand hyatt floor plan



## 5TH WORLD CONFERENCE OF **science journalists**

### Exhibition hours:

Tuesday 17 April 2007 8.00am to 6.00pm

Wednesday 18 April 2007 8.00am to 6.00pm

Thursday 19 April 2007 8.00am to 6.30pm



# exhibitors



## The Cooperative Research Centres

### BOOTHS 1, 2, 3

The Cooperative Research Centres (CRC) Program was established by the Australian Government to bring together researchers and research users. The program emphasises the importance of collaborative arrangements to maximise the benefits of research through an enhanced process of utilisation, commercialisation and technology transfer. It also has a strong education component with a focus on producing graduates with skills relevant to industry needs. CRCs participating in the 5th World Conference of Science Journalists include the Bushfire CRC, the Dairy CRC, the Desert Knowledge CRC, the CRC for Molecular Plant Breeding, the CRC for Oral Health Science, Railway Engineering and Technologies CRC and the CRC for Australian Weeds Management.

Contact: Gabrielle Sheehan  
Tel: +61 3 9607 8608  
Fax: +61 3 9600 2044  
Email: [gabrielle.sheehan@dairycrc.com](mailto:gabrielle.sheehan@dairycrc.com)

[www.crc.gov.au/Information](http://www.crc.gov.au/Information)



## Ludwig Institute for Cancer Research

### BOOTH 4

The international, non-profit Ludwig Institute for Cancer Research is advancing the understanding and control of cancer. Coordinated laboratory and clinical research programs – plus the infrastructure to produce clinical reagents and conduct clinical trials – enable LICR to drive the translation of its investigators' discoveries into applications for human benefit.

Contact: Sarah L White  
PhD Director  
Office of Communications  
Address: 605 Third Avenue  
33rd Floor  
New York  
NY 10158 USA  
Tel: +1 212 450 1543 (New York business hours)  
Tel: +1 917 974 7952 (after hours)  
Fax: +1 212 450 1555  
Email: [swhite@licr.org](mailto:swhite@licr.org)

[www.licr.org](http://www.licr.org)



## The Office of Science and Technology (OST)

### BOOTH 5

The Office of Science and Technology (OST) supports the ongoing development of a scientifically and technologically advanced Victoria. The State Government's commitment to science, technology and innovation is a whole-of-government and whole-of-state initiative. Office of Science and Technology (OST) policy and programs are designed to address Victoria's development needs and priorities.

Contact: Rachael Dalgleish  
Address: Level 35  
121 Exhibition Street  
Melbourne VIC 3000  
Tel: +61 3 9651 9578  
Fax: +61 3 9651 9304  
Email: [rachael.dalgleish@iird.vic.gov.au](mailto:rachael.dalgleish@iird.vic.gov.au)

[www.business.vic.gov.au](http://www.business.vic.gov.au)



## Repelling the invaders

### BOOTH 6

Emerging infectious diseases and feral animals – different types of invaders that two separate Cooperative Research Centres are working to repel: the Australian Biosecurity CRC and the Invasive Animals CRC, respectively. To find out more about SARS or bird flu, or impacts of ferals on Australian wildlife and why we must control them, contact:

Contact: Communication Manager  
Australian Biosecurity CRC for  
Emerging Infectious Disease  
Address: Bld 76, Molecular Biosciences (SMMS)  
University of Queensland  
St Lucia Qld 4072  
Tel: +61 7 3346 8864  
Fax: +61 7 3346 8862  
Email: [info@abcrc.org.au](mailto:info@abcrc.org.au)

[www.abcrc.org.au](http://www.abcrc.org.au)

Contact: Invasive Animals CRC  
University of Canberra  
Bruce ACT 2617

Tel: +61 2 6201 2890  
Fax: +61 2 6201 5305  
Email: [kerryn.molloy@invasiveanimals.com](mailto:kerryn.molloy@invasiveanimals.com)

[www.invasiveanimals.com](http://www.invasiveanimals.com)



## Syft Technologies

### BOOTH 7

Syft Technologies is an award-winning company supplying SIFT-MS (Selected Ion Flow Tube Mass Spectrometry) instrumentation, an analytical technology platform that analyses and qualifies the presence of volatile organic compounds in air samples in real-time. Multiple applications include breath-based research, fumigant and contraband detection, food and flavour research and environmental monitoring.

Contact: CM Rebecca Bain  
Sales and Marketing Manager  
Address: 3 Craft Place  
Middleton  
PO Box 28 149  
Christchurch  
New Zealand  
Tel: +64 3 338 6701  
Fax: +64 3 338 6704  
Email: [rebecca.bain@syft.com](mailto:rebecca.bain@syft.com)

[www.syft.com](http://www.syft.com)



## The University of Melbourne

### BOOTH 8

The University of Melbourne is one of the world's outstanding research-led universities. Peers rank Melbourne in the top 10 world-wide (Peer review, Times Higher Education Supplement 2006 World University Rankings). Annual expenditure on research makes it Australia's second largest research organisation. Melbourne has extensive links with industry through collaborative projects and commercialisation of innovative research.

Contact: Pat Freeland-Small  
Vice-Principal  
(Marketing & Communications)  
Address: Level 3  
780 Elizabeth Street  
Melbourne VIC 3000  
Tel: +61 3 8344 8705  
Fax: +61 3 9349 4921  
Email: [p.freeland-small@unimelb.edu.au](mailto:p.freeland-small@unimelb.edu.au)

[www.unimelb.edu.au](http://www.unimelb.edu.au)

# exhibitors



The University of Sydney

ruralR&D  
CORPORATIONS



## The University of Sydney

### BOOTH 9

The University of Sydney, established in 1850, is Australia's first and one of the nation's premier universities, regularly ranked among the world's best. Sydney has an international reputation for excellence in research, particularly across all the disciplines of medicine and the sciences, and is home to numerous national research facilities.

Contact: Andrew Potter  
Media Manager  
Address: Media Office (A14)  
University of Sydney  
NSW 2006  
Tel: +61 2 9351 4514  
Mob: +61 414 998 521  
Fax: +61 2 9351 3737  
Email: a.potter@usyd.edu.au

[www.usyd.edu.au](http://www.usyd.edu.au)

## The Council of Rural Research and Development

### BOOTH 10

The Council of Rural Research and Development Corporations' Chairs is a representative body for 14 Rural Research and Development Corporations (Rural RDCs). The Rural RDCs are organisations with a unique funding arrangement between the Australian Government and industry levy payers. Covering virtually all of Australia's agricultural, fisheries and forestry industries, the Rural RDCs are guided by the Australian Government's National Research Priorities. Over the last 25 years R&D has helped Australian agriculture double its productivity.

Contact: The Secretariat  
Address: Level 1  
33 Ainslie Street  
Canberra City ACT 2600  
Tel: +61 2 6103 8200  
Fax: +61 2 6103 8233  
Email: secretariat@ruralrdc.com.au

[www.ruralrdc.com.au](http://www.ruralrdc.com.au)

## CSIRO

### BOOTHS 11 & 12

CSIRO is Australia's national science agency. We carry out scientific research in areas including energy, the environment, IT, health, mining, manufacturing, agriculture and natural resources. Our work delivers improvements to every aspect of life from oceans to energy, metals to astronomy, and sustainability to food. CSIRO PUBLISHING is an independent CSIRO-owned information business covering a range of scientific disciplines.

Contact: Marilyn Chalkley  
Manager  
CSIRO Media Liaison  
Address: CSIRO Corporate Centre  
Limestone Avenue  
Campbell ACT 2612  
Tel: +61 2 6276 6859  
Fax: +61 2 6276 6821  
Email: marilyn.chalkley@csiro.au

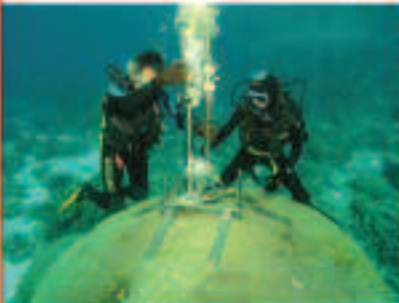
[www.csiro.au](http://www.csiro.au)



Australian Government

Department of the Environment and Water Resources

Australian Greenhouse Office



The Australian Government's \$2 billion climate change strategy is using world-class science to monitor and manage Australia's greenhouse emissions, develop new low emission technologies, adapt to unavoidable climate change and to inform international action. As part of this strategy, the Australian Climate Change Science Programme is advancing our understanding of climate change and its potential effects on Australia and our region.

For information on the programme or its projects - from ice core drilling in Antarctica to emissions monitoring at Cape Grim - contact the Australian Greenhouse Office on (02) 6274 1859 or [communications@greenhouse.gov.au](mailto:communications@greenhouse.gov.au).

Photo: Eric Mahon, CSIRO



## International Development Research Centre

### BOOTH 13

Canada's International Development Research Centre (IDRC) is one of the world's leading institutions in the generation and application of new knowledge to meet the challenges of international development. For more than 35 years, IDRC has worked in close collaboration with researchers from the developing world to build healthier, more equitable, and more prosperous societies.

Francine Bouchard  
 Agente d'information/Information Officer  
 Affaires publiques/Public Affairs  
 Communications, CRDI/IDRC  
 Tel: +61 3 236 6163 poste/ext 2101  
 Fax: +61 3 563 2476  
 Email: fbouchard@idrc.ca

[www.idrc.ca](http://www.idrc.ca)



## EurekAlert!

### BOOTH 14

EurekAlert! ([www.EurekAlert.org](http://www.EurekAlert.org)) is the premier global news service focused on science, medicine and technology. EurekAlert! offers press release distribution, an experts database, a multimedia gallery and other services aimed at connecting the scientific and medical community with reporters. More than 5,200 reporters worldwide rely on EurekAlert! for free story ideas and resources.

Contact: Jill Grigg  
 EurekAlert!  
 American Association for the  
 Advancement of Science  
 Address: 1200 New York Ave  
 NW, Washington  
 DC 20005 USA  
 Tel: +1 202 326 6716  
 Fax: +1 202 898 0391  
 Email: [jgrigg@aaas.org](mailto:jgrigg@aaas.org) or  
[webmaster@eurekalert.org](mailto:webmaster@eurekalert.org)

[www.EurekAlert.org](http://www.EurekAlert.org)



## Associations

### BOOTH 15

Visit us for information on the Australian Science Communicators, World Federation of Science Journalists, Australasian Medical Writers' Association and the other associations involved in the conference.

[www.asc.asn.au](http://www.asc.asn.au)  
[www.wfsj.org](http://www.wfsj.org)  
[www.medicalwriters.org](http://www.medicalwriters.org)



**Australian Government**  
 Department of Education,  
 Science and Training

## Department of Education, Science and Training

### BOOTH 16

DEST provides national leadership and works in collaboration with Australian states and territories, industry, other agencies and the community in support of the Government's objectives. We develop and implement policies to ensure the continuing relevance of education, science and training to contemporary needs and the growing requirement for lifelong learning. We also ensure high quality and value for money in delivering Government-funded programs.

Address: GPO Box 9880  
 Canberra ACT 2601  
 Tel: +61 2 6240 5066  
 Fax: +61 2 6123 6168  
 Email: [kelly.fong@dest.gov.au](mailto:kelly.fong@dest.gov.au)

[www.dest.gov.au](http://www.dest.gov.au)